

**Jewel & Esk College
Edinburgh Campus**
24 Milton Road East,
Edinburgh
EH15 2PP

t: 0131 344 7000
f: 0131 344 7001
w: www.jec.ac.uk

**Public transport to our
Edinburgh Campus:**
6, 44, 44A, 44B, 44C,
45,124

**Train service to our
Edinburgh Campus:**
Brunstane train station
is a 15 mins walk
from the campus.

Trains run directly
from Edinburgh and
Newcraighall.

**Jewel & Esk College
Midlothian Campus**
46 Dalhousie Road
Dalkeith
EH22 3FR

t: 0131 344 7000
f: 0131 344 7002
w: www.jec.ac.uk

**Public transport to our
Midlothian Campus:**
3, 3A, 29, 49, 90, 302, 303,
X95, 140, 141



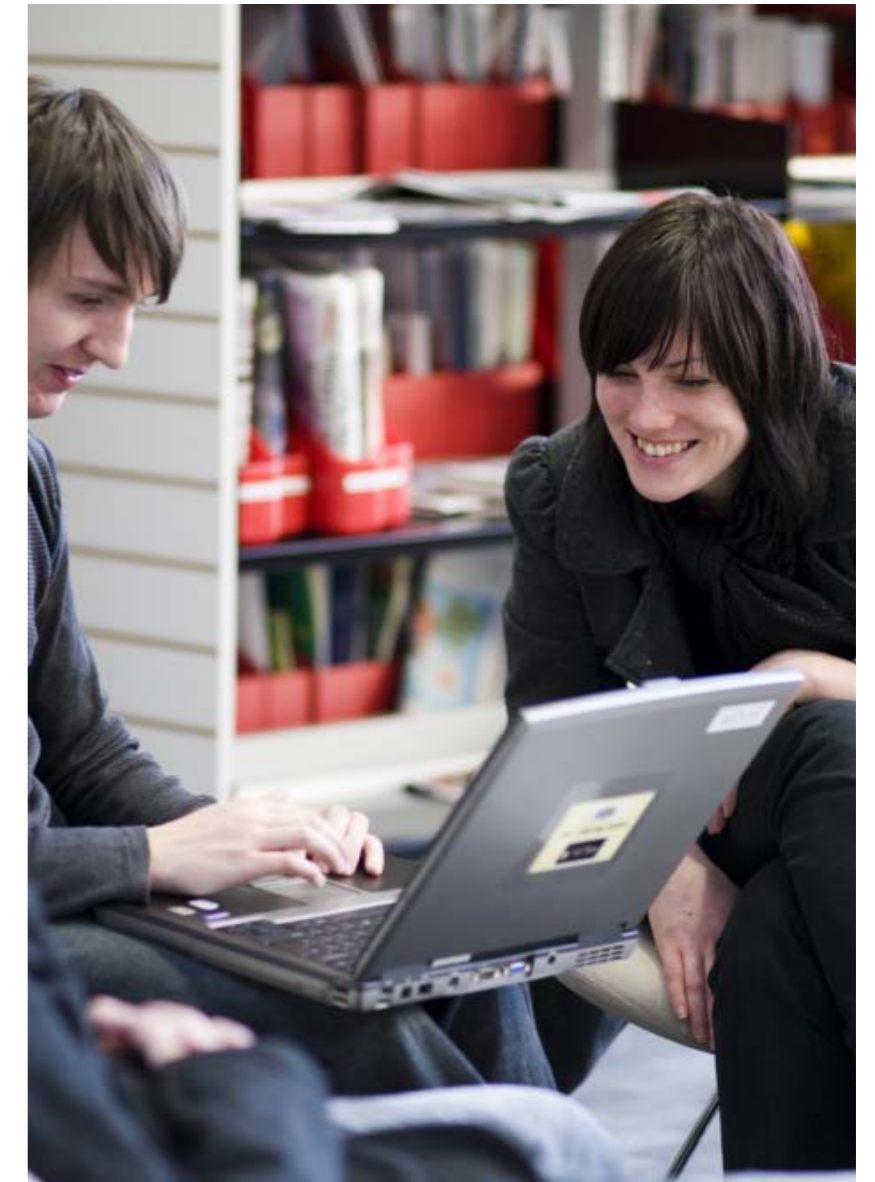
Jewel & Esk College acknowledges the dignity and diversity of all individuals and will seek to promote equality of opportunity for all.

The college will actively promote equality, diversity and inclusion by removing barriers to education, training and employment opportunities and by widening access through development of a flexible and inclusive culture.'

DATA PROTECTION ACT 1998 STATEMENT - Jewel & Esk College is committed to ensuring that the processing of personal data is only undertaken in the legitimate operation of the business of the college. We will ensure that the eight principles on which the Act is based are made known to and observed by all our staff.

PLEASE NOTE: Although every attempt is made to supply accurate information, this leaflet is subject to change without prior notice. Courses or classes may be cancelled due to unforeseen circumstances or insufficient numbers attending the first or subsequent classes. For the latest information please contact the college directly on 0131 344 7000.

Fee Waiver Entitlement Money Matters 2008/09



Full-time

There is a tuition fee of £1,265 for full-time HNC/D courses: if you are a Scottish or EU student you should apply to SAAS (Student Awards Agency for Scotland) for the fee to be paid to the College on your behalf (see information on full-time HNC/D funding). The fee for full-time courses below HNC/D is waived for UK residents (ask for information on Bursaries and Educational Maintenance Allowances).

Part-time

The following applies to qualifying courses. Not all courses offer fee waiver – check with the Faculty concerned before enrolling. Exam resits do not qualify.

Benefit/Allowance Type	Eligibility
Income Support*	Student or Students family must receive benefit
Working Tax Credit*	Student or Students family must receive benefit
Pension Credit*	Student or Students family must receive benefit
Housing Benefit*	Student or Students family must receive benefit
Carer's Allowance*	Student must receive allowance
Disability Living Allowance*	Student must receive allowance
Severe Disablement Allowance*	Student must receive allowance
Employment & Support Allowance*	Student must receive allowance
Incapacity Benefit*	Student must receive benefit
Jobseeker Allowance*	Student must be a registered Job Seeker
Low income – 1 person in household**	2007/2008 Financial year household income up to £8,282 qualifies
Low income – couple without children**	2007/2008 Financial year household income up to £12,395 qualifies
Low income – with dependent children**	2007/2008 Financial year household income up to £18,977 qualifies
Asylum Seeker (as defined in the Immigration & Asylum Act 2002)*	Student or Students Spouse/children are Asylum Seekers

*All students must provide the College with official documentary evidence as appropriate from the Department for Work and Pensions, their local authority, the Job Centre Plus or the Inland Revenue as to their eligibility to receive a fee waiver. Such evidence must be obtained prior to the fee waiver being approved & must be attached to the standard JEC Enrolment form. Documentary evidence is required for every enrolment.

** The student must satisfy JEC that their family's annual income does not exceed the stated amount. The College will require evidence such as P60's or payslips for financial year 2007/2008.

If you have any queries regarding the fee waiver policy please contact the Finance office on **0131 344 7151** or log onto **www.jec.ac.uk**

For further details contact us at:

Student Services (addresses on the reverse of this leaflet)
0131 344 7163
studentservices@jec.ac.uk

Leaflets available on this series:

- Making Ends Meet
- Moving onto HNC/D
- Help Towards Childcare
- Funding for Further Education
- New Students HNC/D
- Fee Waiver Entitlement